



Founded in 2001, Fera has over 20 years experience in developing, constructing and managing renewable energy plants. We pride ourselves on a 100% renewable focus, which means no coal, no oil and no gas, just clean renewable energy.

The Seymour wind project represents an opportunity for the local region in the transition to low carbon sustainable energy. The project area was investigated due to its high wind resource and close proximity to the main transmission line between Melbourne and Sydney.



OUR MISSION

To generate electricity from renewable sources, efficiently and sustainably, in perfect integration with the landscape and it's community

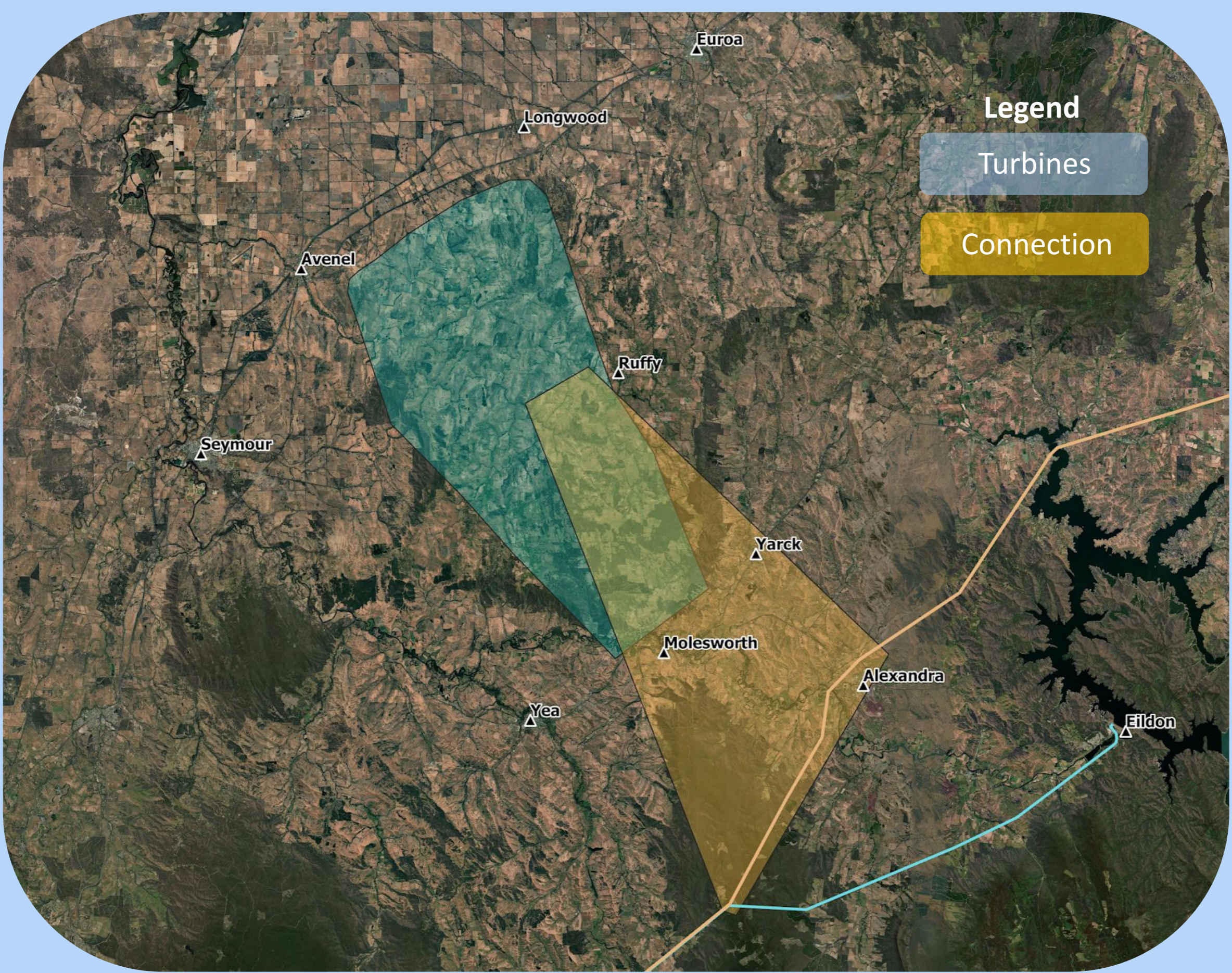


feraaustralia.com.au

SEYMOUR WIND FARM



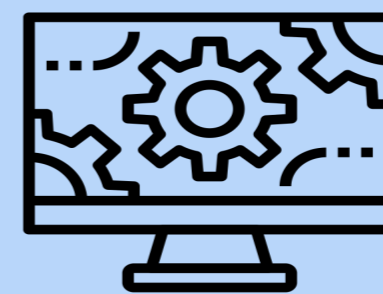
Initial Areas under Investigation for the Seymour Wind Farm



The wind farm investigation area is bound by Avenel, Longwood, Ruffy, Highlands and Tarcombe.

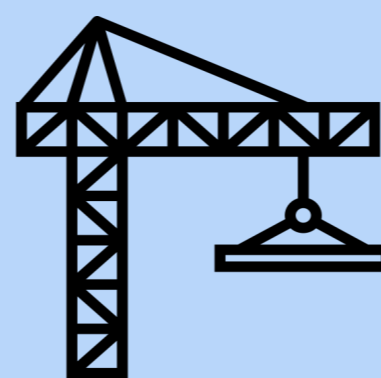
We have selected this area based on its strong wind resource and its proximity to the main transmission line between Melbourne and Sydney, with care taken to minimise impacts to local homes in the area.

Please make contact at seymour@feraaustralia.com.au or 0481 234 229



Phase 1:
Preliminary Investigations
(2020-2023)

Phase 2:
Planning & Design
(2023-2025)



Phase 3:
Construction and commissioning
(2025-2026)

Phase 4:
Operation
(2026-2056)



GET INVOLVED

Fera places strong importance on an open and honest relationship with the local community.

We are looking for community members to establish a Community Consultative Committee (CCC). Part of the revenue generated by the project will be dedicated to a wide-ranging community fund, for plans determined by the community; projects that are important locally and create ongoing community value and legacy.

Local Involvement:

Fera's approach is to work with the community and all stakeholders to ensure we arrive at a project that is one we are proud of, a project that is understood and a project that provides strong benefits for the local community.

Including:

- Improved infrastructure (road, communications and electrical supply)
- Local jobs and investment
- Support for local legacy projects and programs

We look forward to sitting down with all local landholders and community and discussing the project with you.

Please make contact at
seymour@feraaustralia.com.au or
0481 234 229



SUSTAINABILITY BENEFITS



Renewable energy projects deliver positive impacts for the environment. They provide sustainable energy; taking advantage of resources such as wind and the sun. Importantly, they provide an alternative to high carbon intensive and finite sources of historic energy generation such as coal or oil. Importantly, wind farms produce their energy sustainably for 40 to 50 years and at the end of their life time, 100% of the turbines, towers and blades will be recycled.

Estimated production of the Seymour wind Farm:

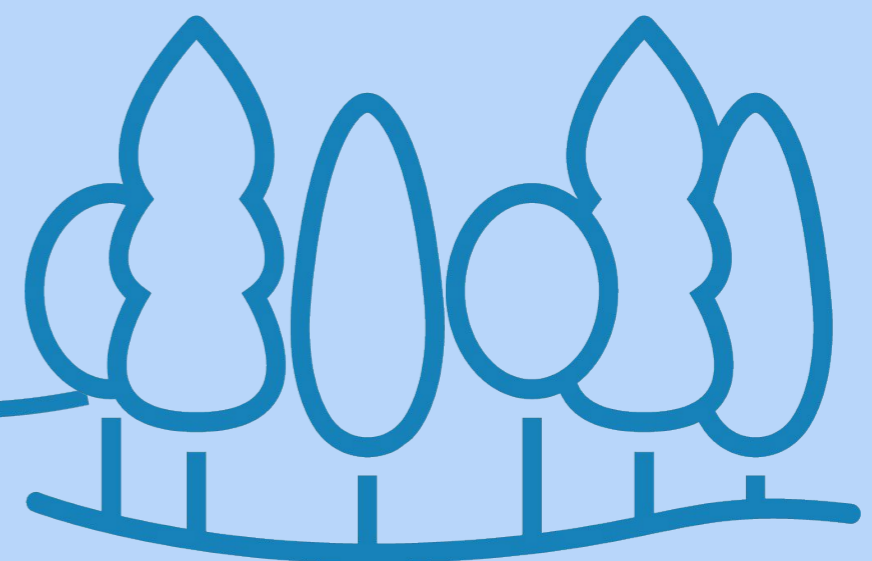
2 Million MWh per year

This is equivalent to:

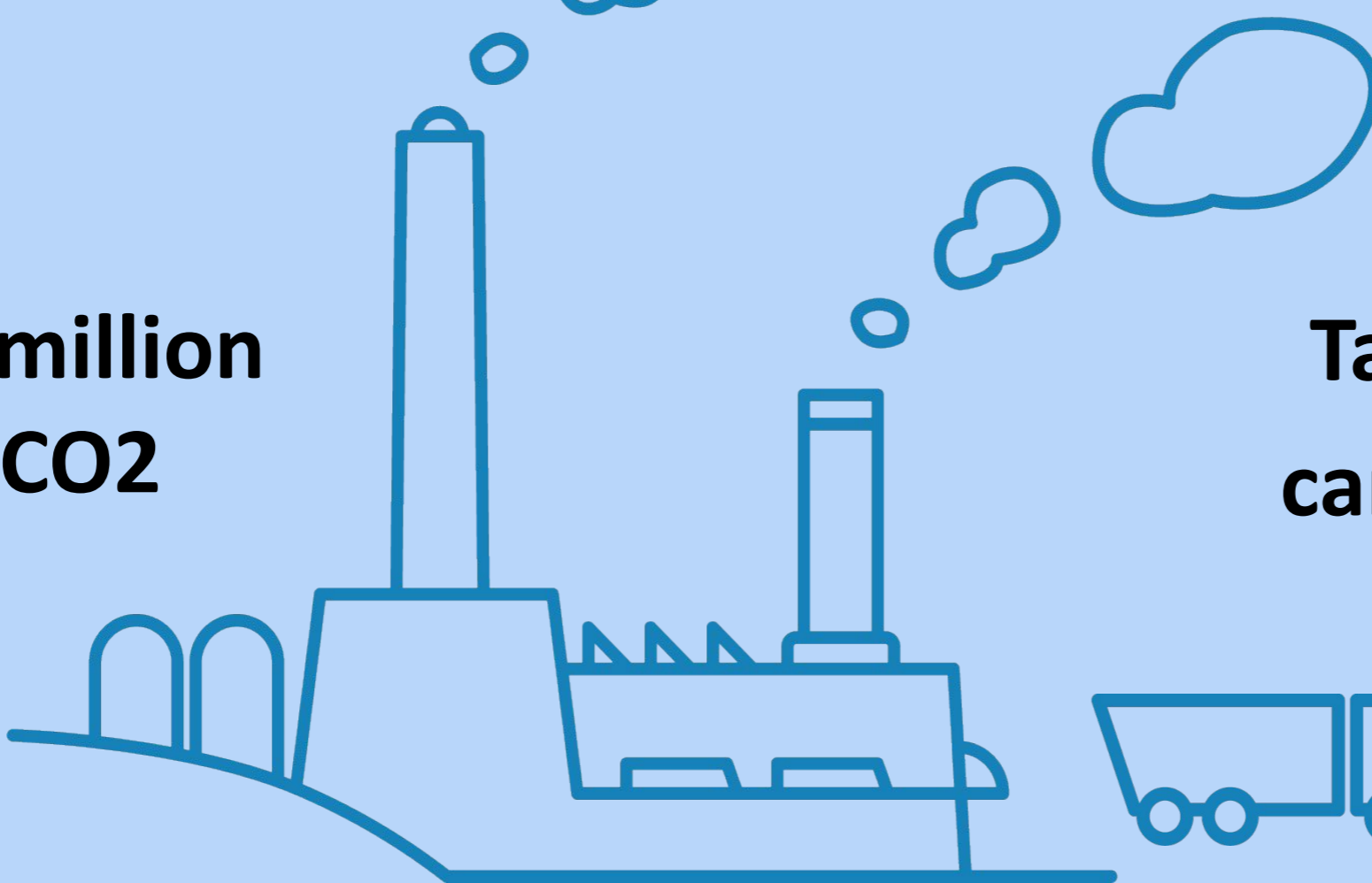
Powering
430,000 homes.



Planting
7 million trees



Displacing 2 million
tonnes of CO2



Taking 700,000
cars off the road



LOCAL JOBS



Fera is committed to sourcing jobs within the local community. We look forward to partnering with local business and services on the project.

Studies

- Noise
- Aviation
- Shadow Flicker
- Ecology (flora and fauna)
- Traffic and transport
- Cultural Heritage
- Geotech

Roads and Access

- Quarry Materials
- Concrete Supply
- Road construction
- Electricians, fabricators
- Apprentices, labourers
- Crane operators
- Project managers
- Engineers

Maintenance

- Fencing
- Ongoing Ecology (bird and vegetation)
- Turbine maintenance (trade)
- Road maintenance
- Local Fera Office staff

Indirect local jobs

- Fencing
- Local services
- Real estate / housing
- Sport and entertainment
- Medical, education. services
- Food and local retail

Please make contact at
seymour@feraaustralia.com.au
or 0481 234 229



STAKEHOLDERS

Get Involved:

Fera is committed to working with the community and all stakeholders to ensure we deliver a project that is one that we are proud of, a project that is understood and a project that provides strong benefits for the local community. This includes:

- Community
- Taungurung people
- Landowners
- Local Businesses and Services
- Local Employees
- Local Government
- State Government and departments
- Federal Government and departments
- Utilities
- Emergency Services
- Environmental Consultants
- Planning Consultants
- AEMO
- Equipment manufacturers
- Energy customers
- ...

We look forward to sitting down with all local landholders and community and discussing the project with you.

Please make contact at seymour@feraaustralia.com.au
or 0481 234 229



MOVING FORWARD

An extensive investigation and planning process is required to collect all inputs for the project in order to establish a final plan for the wind farm. The planning phase of the project will continue over the next 3 years. Environmental, social, cultural and physical studies will be investigated over this time.

Get involved. We look forward to sitting down with you and discussing the project.

Please make contact at seymour@feraaustralia.com.au or 0481 234 229

Ecological

- Biodiversity Assessment
- Bird and bat studies
- Vegetation assessment
- Waterways
- Bushfire risk and management

Social

- Shadow Flicker
- Acoustic
- Visual impact
- Photomontages
- Aviation
- Traffic

Cultural

- Consultation with the traditional owners of the land: the Taungurung people
- Cultural heritage studies and management plans

Project Design

- Turbine Selection with aim to minimise turbine density (currently circa 1 turbine per 500 – 700 acres)
- Siting of substation, control building, maintenance facilities
- Turbine layout
- Track Route



PROJECT TIMELINE

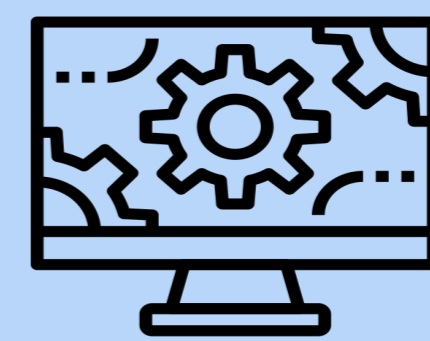


2020 / 2021

Desktop Studies and Initial
Landowner Discussions

2022

Wind Monitoring:
Mast and SODAR



2023

Ongoing Studies and
Investigations

Ongoing Community and
Stakeholder consultation

Site potential substation
location and
connection route

2024

Finalise
Studies

Civil and
Infrastructure
Planning



Planning Permit

2026

Construction and
commissioning

